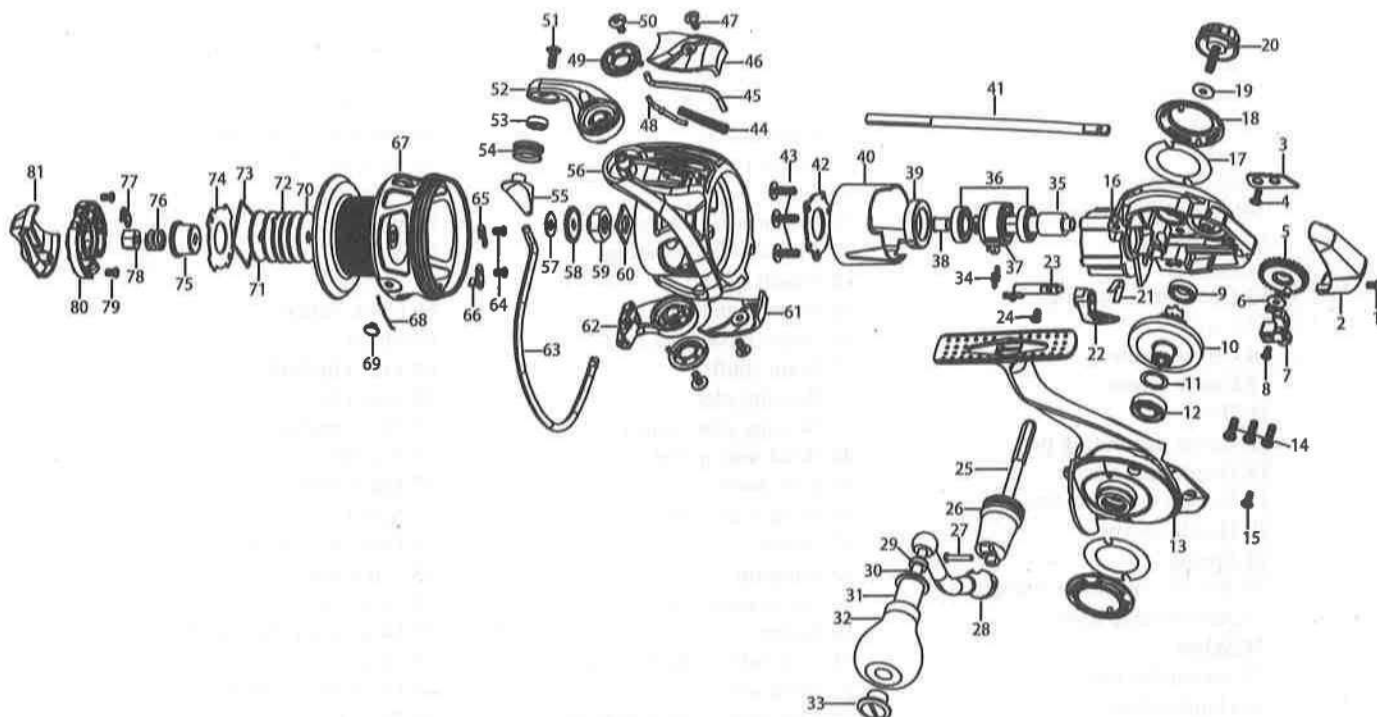


SEAHAWK® CASPIANARK



SEAHAWK® CASPIANARK

- | | | |
|------------------------------|------------------------------|-------------------------------|
| 1.Screw | 28.Handle | 55.Water-shape liner roller |
| 2.Real cover | 29.Ball bearing | 56.Rotor |
| 3.Slider guide | 30.Knob rivet | 57.Click gear washer |
| 4.Screw | 31.Knob sleeve | 58.Click gear |
| 5.Oscillation Gear | 32.Knob | 59.Six-angle nut |
| 6.Screw | 33.Knob cover | 60.Quadrangle washer |
| 7.Slider | 34.One way spring | 61.Side seat cover |
| 8.Shaft screw | 35.Pinion | 62.Side seat |
| 9.Body ball bearing | 36.Pinion ball bearing | 63.Bail arm |
| 10.Driver gear | 37.One way ball bearing | 64.Screw |
| 11.Gasket | 38.Pinion sleeve | 65.Spring |
| 12.Cover ball bearing | 39.Bearing sheath | 66.Click Sclice |
| 13.Cover | 40.Body decorating ring | 67.Spool |
| 14.Cover screw | 41.Main shaft | 68.Line clip bolt |
| 15.Cover screw | 42.Bearing plate | 69.Line clip |
| 16.Body | 43.Bearing plate screw | 70.Drag washer |
| 17.Cover decorating part | 44.Bend seat spring | 71.Washer |
| 18.Decorating paster | 45.Kick lever | 72.Ear washer |
| 19.Handle cover washer | 46.Bend seat cover | 73.Spool ring |
| 20.Handle cover | 47.Screw | 74.Drag knob plate |
| 21.Spring | 48.Fulcrum | 75.Click seat |
| 22.Anti-reverse lever button | 49.Decorating ring | 76.Drag ring |
| 23.Anti-reverse lever | 50.Screw | 77.Drag knob click scide |
| 24.Screw | 51.Line roller wheel screw | 78.Drag nut |
| 25.Six-angles bolt | 52.Bend seat | 79.Drag knob screw |
| 26.Handle sleeve | 53.Line roller wheel bearing | 80.Drag knob |
| 27.Handle bolt | 54.Line roller wheel | 81.Drag knob decorating cover |